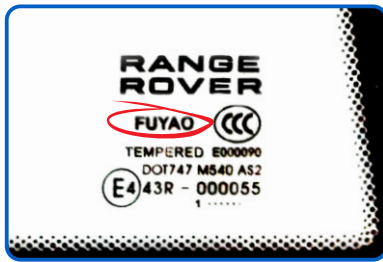




Fit FUYAO
Windscreens



Brand Name of Glass

Required: No
Often, the trademark name of the glass is present. This includes Temperite, Lamisafe, Lampiane, and more.



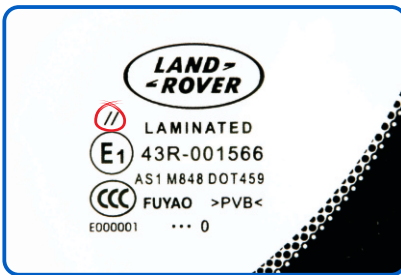
Name/Logo of Glass Manufacturer

Required: US [Z26.1996]
This mark identifies the manufacturer, by their name and/or logo ("the manufacturer's distinctive designation or trademark"). Common glass manufacturers include ASAHI and Nippon Safety.



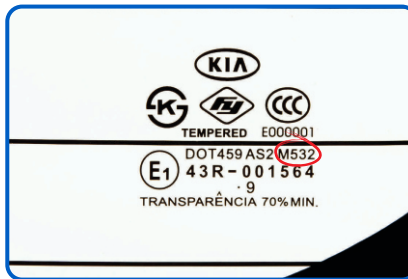
Name of Car Manufacturer

For new cars, the top line normally has the manufacturer of the car. Presumably, this is only present on OEM windscreens. This is apparently all letters (not the funky car manufacturer logo), but can be in the normal font for the car manufacturer.



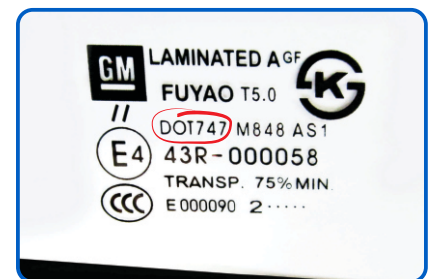
Type of Glass (Roman Numeral)

If the windscreen has the E code on it, you may see a number above the E code, in roman numerals, that is likely slanted. The codes mean:
/ Extra Durable Windscreen
// Regular Multiple Layer Windscreen
/// Multiple layer windscreen that underwent special treatment
IV Plastic Glass
V Non-windshield glass, tinting less than 70%
VI Double glass with tinting less than 70%
None Non-windcreens with tinting less than 70%



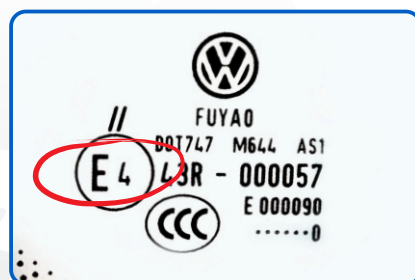
M Number

Required: US [Z26.1996]
The M number is a model number for the piece of glass, which identifies the type of construction. The M number is unique to the manufacturer, so one an M number of M312 by one manufacturer could be different than glass labeled as M312 by another manufacturer. It identifies the glass construction, including the color and thickness. An M number may be used by multiple part numbers.



DOT Code

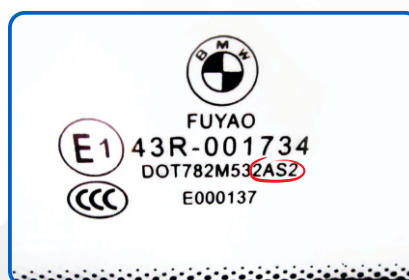
Required: US [FMVSS2056.2]
The DOT code (DOT number) is the letters "DOT" followed by a number that the Department of Transportation (National Highway Traffic Safety Administration) assigns to the manufacturer of the glass. This is required by FMVSS205 section S6.2. If you have a DOT code, we have a page that lists all known DOT codes.



E Code

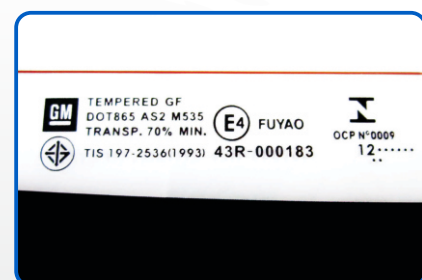
Required: Yes, in EU
The E code (with a capital 'E') is used for cars in European countries, and indicates the country that certified the windscreen. It is a circle with the capital letter E followed by a number. The codes are assigned by the United Nations Economic Commission for Europe.

- | | | | |
|--------------------|-----------------|--------------------------|---------------------------|
| E1 Germany | E13 Luxembourg | E25 Croatia | E40 Republic of Macedonia |
| E2 France | E14 Switzerland | E26 Slovenia | E42 European Community |
| E3 Italy | E16 Norway | E27 Slovakia | E43 Japan |
| E4 Netherlands | E17 Finland | E28 Belarus | E45 Australia |
| E5 Sweden | E18 Denmark | E29 Estonia | E46 Ukraine |
| E6 Belgium | E19 Romania | E31 Bosnia & Herzegovina | E47 South Africa |
| E7 Hungary | E20 Poland | E32 Latvia | E48 New Zealand |
| E8 Czech Republic | E21 Portugal | E33 Bulgaria | E49 Cyprus |
| E9 Spain | E22 Russia | E34 Bulgaria | E50 Malta |
| E10 Serbia | E23 Greece | E36 Lithuania | E51 Republic of Korea |
| [& Montenegro] | E24 Ireland | E37 Turkey | E52 Malaysia |
| E11 United Kingdom | | E39 Azerbaijan | E53 Thailand |
| E12 Austria | | | |



AS Number

Required: US [Z26.1996]
The AS number stands for American Standard, and is "AS" (or "American Standard") followed by a number indicating the position in which the glass may be used, based on its optical quality. AS1 is the clearest glass (at least 70% light transmission), is laminated, and can be used anywhere in a motor vehicle (typically just the windscreen). AS2 is tempered with at least 70% light transmissions, and can be used anywhere except the windscreen, and AS3 can be used in certain locations in certain vehicles (and can be laminated or tempered, and has less than 70% light transmission). There are higher numbers used for other purposes, but are not normally encountered in cars. This number must be near the manufacturer's name/logo, preferably below it (per Z26.1996).



Other Codes

Month and Year of Production - you may see the month and year of production, possibly at the bottom of the windscreen marking.

- U
- UV
- UVS